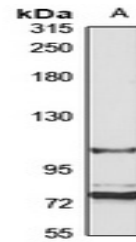


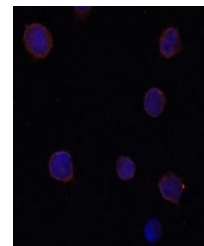
Product Datasheet

ANO2 antibody (orb666032)

Description	Rabbit polyclonal antibody to ANO2
Species/Host	Rabbit
Reactivity	Human, Mouse, Rat
Conjugation	Unconjugated
Tested Applications	IF, IH, WB
Immunogen	Recombinant fusion protein of human ANO2. The exact sequence is proprietary.
Target	ANO2
Preservatives	Liquid in 0.42% Potassium phosphate, 0.87% Sodium chloride, pH 7.3, 30% glycerol, and 0.01% sodium azide.
Form/Appearance	Liquid in 0.42% Potassium phosphate, 0.87% Sodium chloride, pH 7.3, 30% glycerol, and 0.01% sodium azide.
Storage	Maintain refrigerated at 2-8°C for up to 2 weeks. For long term storage store at -20°C in small aliquots to prevent freeze-thaw cycles.
Note	For research use only
Clonality	Polyclonal
Source	Rabbit
Uniprot ID	Q8CFW1 , Q9NQ90
Entrez	57101 , 243634
Dilution Range	WB: 1-500-2000, IF: 1-50-200
Expiration Date	12 months from date of receipt.



Western blot analysis of ANO2 expression...



Immunofluorescent analysis of ANO2 stain...