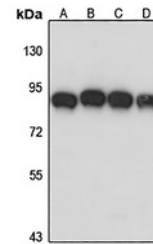


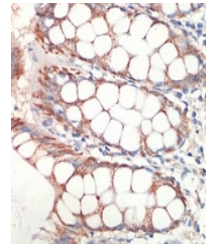
Product Datasheet

AFG3L2 antibody (orb665988)

Description	Rabbit polyclonal antibody to AFG3L2
Species/Host	Rabbit
Reactivity	Human, Mouse, Rat
Conjugation	Unconjugated
Tested Applications	IH, IP, WB
Immunogen	Recombinant fusion protein of human AFG3L2. The exact sequence is proprietary.
Target	AFG3L2
Preservatives	Liquid in 0.42% Potassium phosphate, 0.87% Sodium chloride, pH 7.3, 30% glycerol, and 0.01% sodium azide.
Form/Appearance	Liquid in 0.42% Potassium phosphate, 0.87% Sodium chloride, pH 7.3, 30% glycerol, and 0.01% sodium azide.
Storage	Maintain refrigerated at 2-8°C for up to 2 weeks. For long term storage store at -20°C in small aliquots to prevent freeze-thaw cycles.
Note	For research use only
Clonality	Polyclonal
Source	Rabbit
Uniprot ID	Q9Y4W6 , Q8JZQ2
Entrez	69597 , 10939
Dilution Range	WB: 1-500-2000, IHC-P: 1-50-200
Expiration Date	12 months from date of receipt.



Western blot analysis of AFG3L2 expressi...



Immunohistochemical analysis of AFG3L2 S...