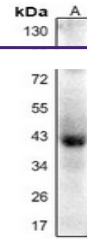

Product Datasheet

Actin-pan (AcK52/50/51) antibody (orb665845)

Description

Rabbit polyclonal antibody to Actin-pan (Acetyl-



Western blot analysis of Actin-pan (Acet...

Species/Host

Rabbit

Reactivity

Human, Mouse, Rat

Conjugation

Unconjugated

Tested Applications

WB

Immunogen

KLH-conjugated synthetic acetylated peptide corresponding to residues surrounding K52/50/51 of human Actin-pan protein. The exact sequence is proprietary.

Target

ACTA2; ACTB; ACTC1; ACTG1; ACTG2; ACTA1

Preservatives

Liquid in 0.42% Potassium phosphate, 0.87% Sodium chloride, pH 7.3, 30% glycerol, and 0.01% sodium azide.

Form/Appearance

Liquid in 0.42% Potassium phosphate, 0.87% Sodium chloride, pH 7.3, 30% glycerol, and 0.01% sodium azide.

Storage

Maintain refrigerated at 2-8°C for up to 2 weeks. For long term storage store at -20°C in small aliquots to prevent freeze-thaw cycles.

Note

For research use only

Clonality

Polyclonal

Source

Rabbit

Uniprot ID
[P68033](#), [P63267](#), [P68035](#), [P62736](#), [P60709](#), [P60711](#), [P63259](#), [P60710](#), [P68133](#), [P68032](#), [P62738](#), [P63261](#), [P63260](#), [P62737](#)
Entrez
[11461](#), [11465](#), [81822](#), [11475](#), [58](#), [11464](#), [71](#), [59](#), [81633](#), [72](#), [100361457](#), [60](#), [70](#), [29275](#)
Dilution Range

WB: 1-500-1000

Expiration Date

12 months from date of receipt.