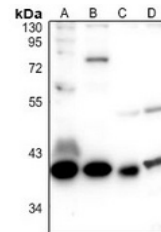


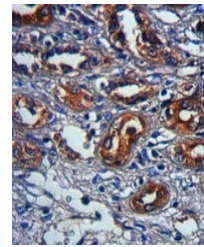
Product Datasheet

GPR109A antibody (orb665817)

Description	Rabbit polyclonal antibody to GPR109A
Species/Host	Rabbit
Reactivity	Human, Mouse, Rat
Conjugation	Unconjugated
Tested Applications	IF, IH, WB
Immunogen	KLH-conjugated synthetic peptide encompassing a sequence within the C-term region of human GPR109A. The exact sequence is proprietary.
Target	HCAR2
Preservatives	Liquid in 0.42% Potassium phosphate, 0.87% Sodium chloride, pH 7.3, 30% glycerol, and 0.01% sodium azide.
Form/Appearance	Liquid in 0.42% Potassium phosphate, 0.87% Sodium chloride, pH 7.3, 30% glycerol, and 0.01% sodium azide.
Storage	Shipped at 4°C. Upon delivery aliquot and store at -20°C for one year. Avoid freeze/thaw cycles.
Note	For research use only
Clonality	Polyclonal
Source	Rabbit
Uniprot ID	Q80Z39 , Q8TDS4 , Q9EP66
Entrez	338442 , 8843 , 80885 , 353250
Dilution Range	WB: 1-500-1000, IF: 1-100-500
Expiration Date	12 months from date of receipt.

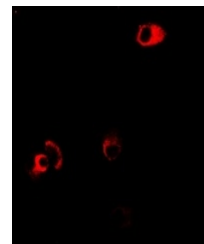


Western blot analysis of GPR109A express...



Immunohistochemical analysis of GPR109A

...



Immunofluorescent analysis of GPR109A st...