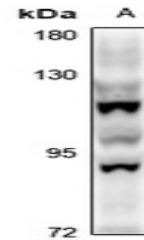


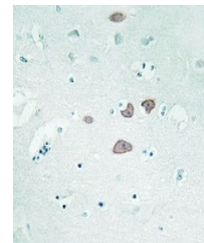
Product Datasheet

STON1 antibody (orb665761)

Description	Rabbit polyclonal antibody to STON1
Species/Host	Rabbit
Reactivity	Human
Conjugation	Unconjugated
Tested Applications	IF, IH, WB
Immunogen	KLH-conjugated synthetic peptide encompassing a sequence within the C-term region of human STON1. The exact sequence is proprietary.
Target	STON1
Preservatives	Liquid in 0.42% Potassium phosphate, 0.87% Sodium chloride, pH 7.3, 30% glycerol, and 0.01% sodium azide.
Form/Appearance	Liquid in 0.42% Potassium phosphate, 0.87% Sodium chloride, pH 7.3, 30% glycerol, and 0.01% sodium azide.
Storage	Maintain refrigerated at 2-8°C for up to 2 weeks. For long term storage store at -20°C in small aliquots to prevent freeze-thaw cycles.
Note	For research use only
Clonality	Polyclonal
Source	Rabbit
Uniprot ID	Q9Y6Q2
Entrez	286749 , 11037
Dilution Range	WB: 1-500-1000, IHC-P: 1-50-200, IF: 1-100-500
Expiration Date	12 months from date of receipt.



Western blot analysis of STON1 expressio...



Immunohistochemical analysis of STON1 st...



Immunofluorescent analysis of STON1 stai...