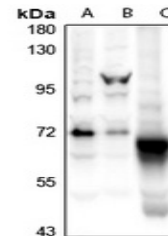


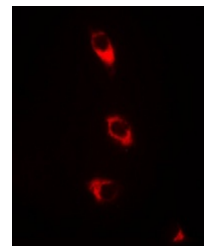
Product Datasheet

CaMK2 beta antibody (orb665748)

Description	Rabbit polyclonal antibody to CaMK2 beta
Species/Host	Rabbit
Reactivity	Human, Mouse, Porcine, Rat
Conjugation	Unconjugated
Tested Applications	IF, WB
Immunogen	KLH-conjugated synthetic peptide encompassing a sequence within the C-term region of human CaMK2 beta. The exact sequence is proprietary.
Target	CAMK2B; CAMK2G
Preservatives	Liquid in 0.42% Potassium phosphate, 0.87% Sodium chloride, pH 7.3, 30% glycerol, and 0.01% sodium azide.
Form/Appearance	Liquid in 0.42% Potassium phosphate, 0.87% Sodium chloride, pH 7.3, 30% glycerol, and 0.01% sodium azide.
Storage	Maintain refrigerated at 2-8°C for up to 2 weeks. For long term storage store at -20°C in small aliquots to prevent freeze-thaw cycles.
Note	For research use only
Clonality	Polyclonal
Source	Rabbit
Uniprot ID	P11730 , Q13555 , P08413 , Q923T9 , P28652 , Q13554
Entrez	816 , 12323 , 818 , 24245 , 171140 , 12325
Dilution Range	WB: 1-500-1000, IF: 1-100-500
Expiration Date	12 months from date of receipt.



Western blot analysis of CaMK2 beta expr...



Immunofluorescent analysis of CaMK2 beta...