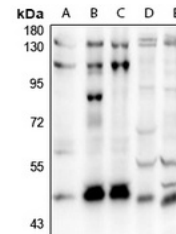


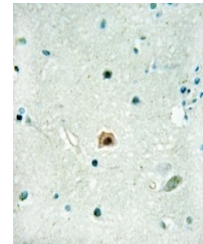
Product Datasheet

SOX8 antibody (orb665742)

Description	Rabbit polyclonal antibody to SOX8
Species/Host	Rabbit
Reactivity	Human, Mouse, Porcine, Rat, Zebrafish
Conjugation	Unconjugated
Tested Applications	IH, WB
Immunogen	KLH-conjugated synthetic peptide encompassing a sequence within the center region of human SOX8. The exact sequence is proprietary.
Target	SOX8; SOX9; SOX17; SOX18
Preservatives	Liquid in 0.42% Potassium phosphate, 0.87% Sodium chloride, pH 7.3, 30% glycerol, and 0.01% sodium azide.
Form/Appearance	Liquid in 0.42% Potassium phosphate, 0.87% Sodium chloride, pH 7.3, 30% glycerol, and 0.01% sodium azide.
Storage	Maintain refrigerated at 2-8°C for up to 2 weeks. For long term storage store at -20°C in small aliquots to prevent freeze-thaw cycles.
Note	For research use only
Clonality	Polyclonal
Source	Rabbit
Uniprot ID	P57073, P35713, P48436, Q61473, P43680, Q9H6I2, Q04887, Q04886
Entrez	64321, 20672, 20682, 6662, 30812, 20681, 54345, 20671
Dilution Range	WB: 1-500-1000, IHC-P: 1-50-200
Expiration Date	12 months from date of receipt.



Western blot analysis of SOX8 expression...



Immunohistochemical analysis of SOX8 sta...