

---

## Product Datasheet

### Alpha-tubulin (pY272) antibody (orb665690)

**Description**

Rabbit polyclonal antibody to Alpha-tubulin

**Species/Host**

Rabbit

**Reactivity**

Human, Mouse, Primate, Rat, Zebrafish

**Conjugation**

Unconjugated

**Tested Applications**

IH, WB

**Immunogen**

KLH-conjugated synthetic phosphopeptide corresponding to residues surrounding Y272 of human Alpha-tubulin protein. The exact sequence is proprietary.

**Target**

TUBA1A

**Preservatives**

Liquid in 0.42% Potassium phosphate, 0.87% Sodium chloride, pH 7.3, 30% glycerol, and 0.01% sodium azide.

**Form/Appearance**

Liquid in 0.42% Potassium phosphate, 0.87% Sodium chloride, pH 7.3, 30% glycerol, and 0.01% sodium azide.

**Storage**

Shipped at 4°C. Upon delivery aliquot and store at -20°C for one year. Avoid freeze/thaw cycles.

**Note**

For research use only

**Clonality**

Polyclonal

**Source**

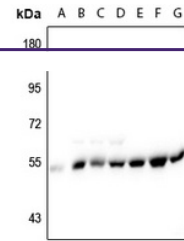
Rabbit

**Uniprot ID**
[P68369](#), [Q71U36](#), [P68366](#), [P68370](#), [Q13748](#), [Q9BQE3](#), [Q6AYZ1](#), [Q6P9V9](#), [P05213](#), [P68373](#), [P68363](#), [Q6PEY2](#)
**Entrez**
[113457](#), [22146](#), [22142](#), [500929](#), [64158](#), [7278](#), [100909441](#), [22143](#), [7277](#), [112714](#), [84790](#), [10376](#), [7846](#)
**Dilution Range**

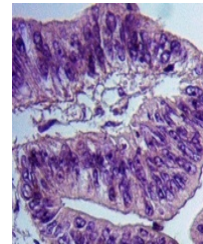
WB: 1-500-1000

**Expiration Date**

12 months from date of receipt.



Western blot analysis of Alpha-tubulin (...



Immunohistochemical analysis of Alpha-tu...