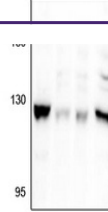

Product Datasheet

Focal Adhesion Kinase (pS722) antibody (orb665686)

Description

Rabbit polyclonal antibody to Focal Adhesion

kDa A B C D



Western blot analysis of Focal Adhesion ...

Species/Host	Rabbit
Reactivity	Human, Mouse, Rat
Conjugation	Unconjugated
Tested Applications	WB
Immunogen	KLH-conjugated synthetic phosphopeptide corresponding to residues surrounding S722 of human Focal Adhesion Kinase protein. The exact sequence is proprietary.
Target	PTK2
Preservatives	Liquid in 0.42% Potassium phosphate, 0.87% Sodium chloride, pH 7.3, 30% glycerol, and 0.01% sodium azide.
Form/Appearance	Liquid in 0.42% Potassium phosphate, 0.87% Sodium chloride, pH 7.3, 30% glycerol, and 0.01% sodium azide.
Storage	Maintain refrigerated at 2-8°C for up to 2 weeks. For long term storage store at -20°C in small aliquots to prevent freeze-thaw cycles.
Note	For research use only
Clonality	Polyclonal
Source	Rabbit
Uniprot ID	P34152 , O35346 , Q05397
Entrez	5747 , 14083 , 25614
Dilution Range	WB: 1-500-1000
Expiration Date	12 months from date of receipt.