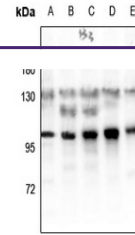

Product Datasheet

Glucocorticoid Receptor (pS203) antibody (orb665665)

Description

Rabbit polyclonal antibody to Glucocorticoid



Western blot analysis of Glucocorticoid

...

Species/Host	Rabbit
Reactivity	Human, Mouse, Rat
Conjugation	Unconjugated
Tested Applications	WB
Immunogen	KLH-conjugated synthetic phosphopeptide corresponding to residues surrounding S203 of human Glucocorticoid Receptor protein. The exact sequence is proprietary.
Target	NR3C1
Preservatives	Liquid in 0.42% Potassium phosphate, 0.87% Sodium chloride, pH 7.3, 30% glycerol, and 0.01% sodium azide.
Form/Appearance	Liquid in 0.42% Potassium phosphate, 0.87% Sodium chloride, pH 7.3, 30% glycerol, and 0.01% sodium azide.
Storage	Maintain refrigerated at 2-8°C for up to 2 weeks. For long term storage store at -20°C in small aliquots to prevent freeze-thaw cycles.
Note	For research use only
Clonality	Polyclonal
Source	Rabbit
Uniprot ID	P04150 , P06536 , P06537
Entrez	2908 , 24413
Dilution Range	WB: 1-500-1000
Expiration Date	12 months from date of receipt.