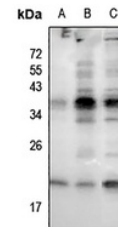


Product Datasheet

RAC1/2/3 (pS71) antibody (orb665661)

Description	Rabbit polyclonal antibody to RAC1/2/3 (Phospho-S71)
Species/Host	Rabbit
Reactivity	Human, Mouse, Rat
Conjugation	Unconjugated
Tested Applications	WB
Immunogen	KLH-conjugated synthetic phosphopeptide corresponding to residues surrounding S71 of human RAC1/2/3 protein. The exact sequence is proprietary.
Target	RAC1; RAC2; RAC3
Preservatives	Liquid in 0.42% Potassium phosphate, 0.87% Sodium chloride, pH 7.3, 30% glycerol, and 0.01% sodium azide.
Form/Appearance	Liquid in 0.42% Potassium phosphate, 0.87% Sodium chloride, pH 7.3, 30% glycerol, and 0.01% sodium azide.
Storage	Maintain refrigerated at 2-8°C for up to 2 weeks. For long term storage store at -20°C in small aliquots to prevent freeze-thaw cycles.
Note	For research use only
Clonality	Polyclonal
Source	Rabbit
Uniprot ID	Q8CFN2, P60764, P60766, P63001, P60763, Q6RUV5, P63000, Q05144, P15153
Entrez	64465, 998, 12540, 5881, 19354, 170758, 363875, 5879, 19353, 5880
Dilution Range	WB: 1-500-1000
Expiration Date	12 months from date of receipt.



Western blot analysis of RAC1/2/3 (Phosp...