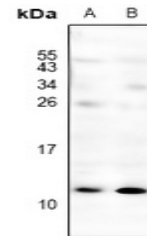


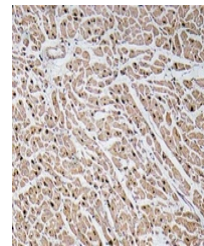
Product Datasheet

CXCL3 antibody (orb665632)

Description	Rabbit polyclonal antibody to CXCL3
Species/Host	Rabbit
Reactivity	Human, Mouse, Rat
Conjugation	Unconjugated
Tested Applications	IH, WB
Immunogen	KLH-conjugated synthetic peptide encompassing a sequence within the C-term region of human CXCL3. The exact sequence is proprietary.
Target	CXCL3
Preservatives	Liquid in 0.42% Potassium phosphate, 0.87% Sodium chloride, pH 7.3, 30% glycerol, and 0.01% sodium azide.
Form/Appearance	Liquid in 0.42% Potassium phosphate, 0.87% Sodium chloride, pH 7.3, 30% glycerol, and 0.01% sodium azide.
Storage	Maintain refrigerated at 2-8°C for up to 2 weeks. For long term storage store at -20°C in small aliquots to prevent freeze-thaw cycles.
Note	For research use only
Clonality	Polyclonal
Source	Rabbit
Uniprot ID	Q6W5C0 , P19876 , Q10746
Entrez	330122 , 171551 , 2921
Dilution Range	WB: 1-500-1000, IHC-P: 1-50-200
Expiration Date	12 months from date of receipt.



Western blot analysis of CXCL3 expressio...



Immunohistochemical analysis of CXCL3 st...