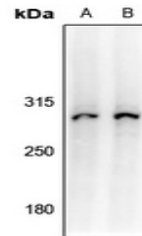


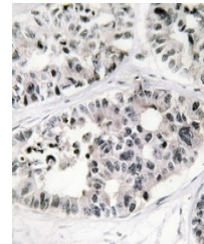
Product Datasheet

Collagen 7 alpha 1 antibody (orb665558)

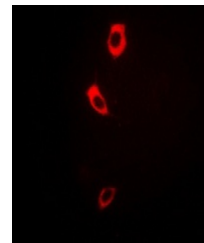
Description	Rabbit polyclonal antibody to Collagen 7 alpha 1
Species/Host	Rabbit
Reactivity	Human, Mouse, Rat
Conjugation	Unconjugated
Tested Applications	IF, IH, WB
Immunogen	KLH-conjugated synthetic peptide encompassing a sequence within the center region of human Collagen 7 alpha 1. The exact sequence is proprietary.
Target	COL7A1
Preservatives	Liquid in 0.42% Potassium phosphate, 0.87% Sodium chloride, pH 7.3, 30% glycerol, and 0.01% sodium azide.
Form/Appearance	Liquid in 0.42% Potassium phosphate, 0.87% Sodium chloride, pH 7.3, 30% glycerol, and 0.01% sodium azide.
Storage	Maintain refrigerated at 2-8°C for up to 2 weeks. For long term storage store at -20°C in small aliquots to prevent freeze-thaw cycles.
Note	For research use only
Clonality	Polyclonal
Source	Rabbit
Uniprot ID	Q02388 , Q63870
Entrez	12836 , 1294
Dilution Range	WB: 1-500-1000, IHC-P: 1-50-200, IF: 1-100-500
Expiration Date	12 months from date of receipt.



Western blot analysis of Collagen 7 alph...



Immunohistochemical analysis of Collagen...



Immunofluorescent analysis of Collagen 7...