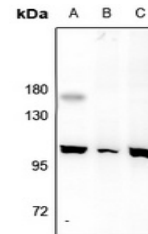


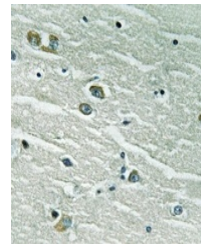
Product Datasheet

MERTK/TYRO3 antibody (orb665540)

Description	Rabbit polyclonal antibody to MERTK/TYRO3
Species/Host	Rabbit
Reactivity	Human, Mouse, Rat
Conjugation	Unconjugated
Tested Applications	IH, WB
Immunogen	KLH-conjugated synthetic peptide encompassing a sequence within the C-term region of human MERTK/TYRO3. The exact sequence is proprietary.
Target	MERTK; TYRO3
Preservatives	Liquid in 0.42% Potassium phosphate, 0.87% Sodium chloride, pH 7.3, 30% glycerol, and 0.01% sodium azide.
Form/Appearance	Liquid in 0.42% Potassium phosphate, 0.87% Sodium chloride, pH 7.3, 30% glycerol, and 0.01% sodium azide.
Storage	Maintain refrigerated at 2-8°C for up to 2 weeks. For long term storage store at -20°C in small aliquots to prevent freeze-thaw cycles.
Note	For research use only
Clonality	Polyclonal
Source	Rabbit
Uniprot ID	P55146 , Q60805 , Q06418 , P55144 , Q12866 , P57097
Entrez	10461 , 7301 , 17289 , 25232 , 22174 , 65037
Dilution Range	WB: 1-500-1000, IHC-P: 1-50-200
Expiration Date	12 months from date of receipt.



Western blot analysis of MERTK/TYRO3 exp...



Immunohistochemical analysis of MERTK/TY...