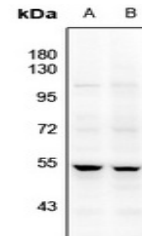


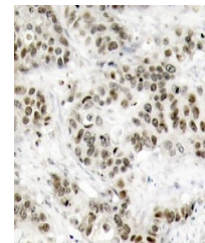
Product Datasheet

JNK1/2/3 antibody (orb665533)

Description	Rabbit polyclonal antibody to JNK1/2/3
Species/Host	Rabbit
Reactivity	Human, Mouse, Rat
Conjugation	Unconjugated
Tested Applications	IH, WB
Immunogen	KLH-conjugated synthetic peptide encompassing a sequence within the center region of human JNK1/2/3. The exact sequence is proprietary.
Target	MAPK8; MAPK9; MAPK10
Preservatives	Liquid in 0.42% Potassium phosphate, 0.87% Sodium chloride, pH 7.3, 30% glycerol, and 0.01% sodium azide.
Form/Appearance	Liquid in 0.42% Potassium phosphate, 0.87% Sodium chloride, pH 7.3, 30% glycerol, and 0.01% sodium azide.
Storage	Maintain refrigerated at 2-8°C for up to 2 weeks. For long term storage store at -20°C in small aliquots to prevent freeze-thaw cycles.
Note	For research use only
Clonality	Polyclonal
Source	Rabbit
Uniprot ID	Q61831 , Q91Y86 , P49186 , P53779 , P49187 , P45983 , P45984 , Q9WTU6 , P49185
Entrez	50658 , 5602 , 26419 , 26420 , 5599 , 5601 , 25272 , 116554
Dilution Range	WB: 1-500-1000, IHC-P: 1-50-200
Expiration Date	12 months from date of receipt.



Western blot analysis of JNK1/2/3 expres...



Immunohistochemical analysis of JNK1/2/3...