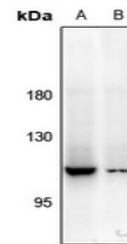


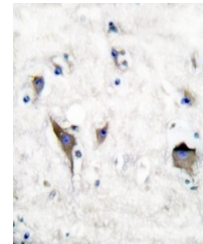
Product Datasheet

PYK2 antibody (orb665528)

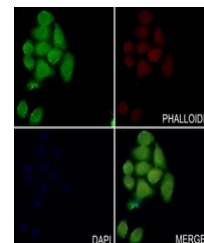
Description	Rabbit polyclonal antibody to PYK2
Species/Host	Rabbit
Reactivity	Human, Mouse, Primate, Rat
Conjugation	Unconjugated
Tested Applications	IF, IH, WB
Immunogen	KLH-conjugated synthetic peptide encompassing a sequence within the C-term region of human PYK2. The exact sequence is proprietary.
Target	PTK2B
Preservatives	Liquid in 0.42% Potassium phosphate, 0.87% Sodium chloride, pH 7.3, 30% glycerol, and 0.01% sodium azide.
Form/Appearance	Liquid in 0.42% Potassium phosphate, 0.87% Sodium chloride, pH 7.3, 30% glycerol, and 0.01% sodium azide.
Storage	Maintain refrigerated at 2-8°C for up to 2 weeks. For long term storage store at -20°C in small aliquots to prevent freeze-thaw cycles.
Note	For research use only
Clonality	Polyclonal
Source	Rabbit
Uniprot ID	P70600 , Q9QVP9 , Q14289
Entrez	19229 , 2185 , 50646
Dilution Range	WB: 1-500-1000, IHC-P: 1-50-200
Expiration Date	12 months from date of receipt.



Western blot analysis of PYK2 expression...



Immunohistochemical analysis of PYK2 sta...



Immunofluorescent analysis of PYK2 stain...