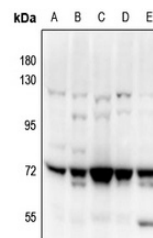


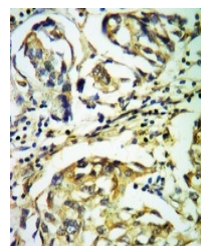
Product Datasheet

PAK4/5 antibody (orb665525)

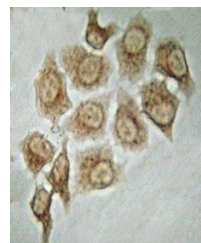
Description	Rabbit polyclonal antibody to PAK4/5
Species/Host	Rabbit
Reactivity	Human, Mouse, Rat
Conjugation	Unconjugated
Tested Applications	IH, WB
Immunogen	KLH-conjugated synthetic peptide encompassing a sequence within the C-term region of human PAK4/5. The exact sequence is proprietary.
Target	PAK4; PAK5
Preservatives	Liquid in 0.42% Potassium phosphate, 0.87% Sodium chloride, pH 7.3, 30% glycerol, and 0.01% sodium azide.
Form/Appearance	Liquid in 0.42% Potassium phosphate, 0.87% Sodium chloride, pH 7.3, 30% glycerol, and 0.01% sodium azide.
Storage	Maintain refrigerated at 2-8°C for up to 2 weeks. For long term storage store at -20°C in small aliquots to prevent freeze-thaw cycles.
Note	For research use only
Clonality	Polyclonal
Source	Rabbit
Uniprot ID	Q9P286 , O96013 , Q8BTW9
Entrez	10298 , 70584
Dilution Range	WB: 1-500-1000, ICC: 1-100-500
Expiration Date	12 months from date of receipt.



Western blot analysis of PAK4/5 expressi...



Immunohistochemical analysis of PAK4/5 s...



Immunocytochemistry analysis of PAK4/5 s...