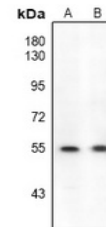


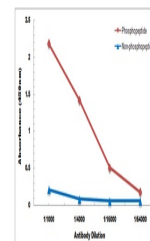
Product Datasheet

ETS1 (pS282) antibody (orb665521)

Description	Rabbit polyclonal antibody to ETS1 (Phospho-S282)
Species/Host	Rabbit
Reactivity	Human, Mouse, Rat
Conjugation	Unconjugated
Tested Applications	WB
Immunogen	KLH-conjugated synthetic phosphopeptide corresponding to residues surrounding S282 of human ETS1 protein. The exact sequence is proprietary.
Target	ETS1
Preservatives	Liquid in 0.42% Potassium phosphate, 0.87% Sodium chloride, pH 7.3, 30% glycerol, and 0.01% sodium azide.
Form/Appearance	Liquid in 0.42% Potassium phosphate, 0.87% Sodium chloride, pH 7.3, 30% glycerol, and 0.01% sodium azide.
Storage	Maintain refrigerated at 2-8°C for up to 2 weeks. For long term storage store at -20°C in small aliquots to prevent freeze-thaw cycles.
Note	For research use only
Clonality	Polyclonal
Source	Rabbit
Uniprot ID	P27577 , P14921 , P41156
Entrez	2113 , 23871 , 24356
Dilution Range	WB: 1-500-1000
Expiration Date	12 months from date of receipt.



Western blot analysis of ETS1 (Phospho-S282) antibody.



Direct ELISA antibody dose-response curve for Phospho-S282 and Non-phospho-S282.