
Product Datasheet

Focal Adhesion Kinase (pS843) antibody (orb665518)

Description

Rabbit polyclonal antibody to Focal Adhesion

Species/Host

Rabbit

Reactivity

Human, Mouse, Rat

Conjugation

Unconjugated

Tested Applications

IH, WB

Immunogen

KLH-conjugated synthetic phosphopeptide corresponding to residues surrounding S843 of human Focal Adhesion Kinase protein. The exact sequence is proprietary.

Target

PTK2

Preservatives

Liquid in 0.42% Potassium phosphate, 0.87% Sodium chloride, pH 7.3, 30% glycerol, and 0.01% sodium azide.

Form/Appearance

Liquid in 0.42% Potassium phosphate, 0.87% Sodium chloride, pH 7.3, 30% glycerol, and 0.01% sodium azide.

Storage

Maintain refrigerated at 2-8°C for up to 2 weeks. For long term storage store at -20°C in small aliquots to prevent freeze-thaw cycles.

Note

For research use only

Clonality

Polyclonal

Source

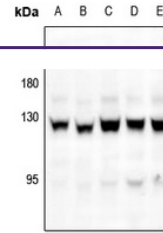
Rabbit

Uniprot ID
[P34152](#), [O35346](#), [Q05397](#)
Entrez
[5747](#), [14083](#), [25614](#)
Dilution Range

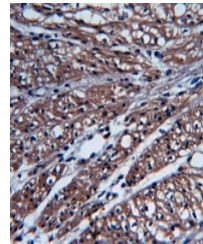
WB: 1-500-1000

Expiration Date

12 months from date of receipt.



Western blot analysis of Focal Adhesion ...



Immunohistochemical analysis of Focal Ad...