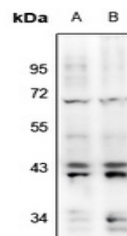


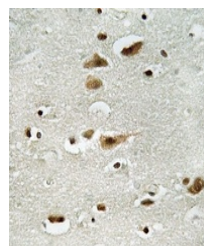
Product Datasheet

ERK1/2 (pY204) antibody (orb665513)

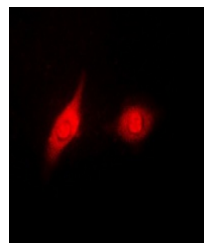
Description	Rabbit polyclonal antibody to ERK1/2 (Phospho-Y204)
Species/Host	Rabbit
Reactivity	Human, Mouse, Rat, Zebrafish
Conjugation	Unconjugated
Tested Applications	IF, IH, WB
Immunogen	KLH-conjugated synthetic phosphopeptide corresponding to residues surrounding Y204 of human ERK1/2 protein. The exact sequence is proprietary.
Target	MAPK1; MAPK3
Preservatives	Liquid in 0.42% Potassium phosphate, 0.87% Sodium chloride, pH 7.3, 30% glycerol, and 0.01% sodium azide.
Form/Appearance	Liquid in 0.42% Potassium phosphate, 0.87% Sodium chloride, pH 7.3, 30% glycerol, and 0.01% sodium azide.
Storage	Shipped at 4°C. Upon delivery aliquot and store at -20°C for one year. Avoid freeze/thaw cycles.
Note	For research use only
Clonality	Polyclonal
Source	Rabbit
Uniprot ID	P63086 , P21708 , P27361 , Q63844 , P28482 , P63085
Entrez	116590 , 26417 , 26413 , 50689 , 5594 , 5595
Dilution Range	WB: 1-500-1000, IHC-P: 1-50-200, IF: 1-100-500
Expiration Date	12 months from date of receipt.



Western blot analysis of ERK1/2 (Phospho...



Immunohistochemical analysis of ERK1/2 (...)



Immunofluorescent analysis of ERK1/2 (Ph...