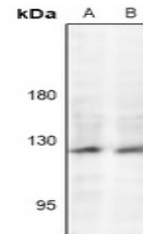


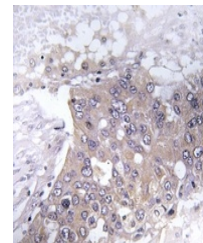
Product Datasheet

JAK2 (pY221) antibody (orb665512)

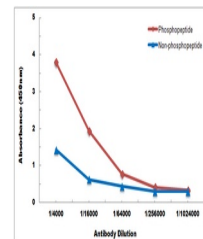
Description	Rabbit polyclonal antibody to JAK2 (Phospho-Y221)
Species/Host	Rabbit
Reactivity	Human, Mouse, Porcine, Primate, Rat
Conjugation	Unconjugated
Tested Applications	IH, WB
Immunogen	KLH-conjugated synthetic phosphopeptide corresponding to residues surrounding Y221 of human JAK2 protein. The exact sequence is proprietary.
Target	JAK2
Preservatives	Liquid in 0.42% Potassium phosphate, 0.87% Sodium chloride, pH 7.3, 30% glycerol, and 0.01% sodium azide.
Form/Appearance	Liquid in 0.42% Potassium phosphate, 0.87% Sodium chloride, pH 7.3, 30% glycerol, and 0.01% sodium azide.
Storage	Maintain refrigerated at 2-8°C for up to 2 weeks. For long term storage store at -20°C in small aliquots to prevent freeze-thaw cycles.
Note	For research use only
Clonality	Polyclonal
Source	Rabbit
Uniprot ID	Q62689 , O60674 , Q62120
Entrez	24514 , 16452 , 3717
Dilution Range	WB: 1-500-1000, IHC-P: 1-50-200
Expiration Date	12 months from date of receipt.



Western blot analysis of JAK2 (Phospho-Y...



Immunohistochemical analysis of JAK2 (Ph...



Direct ELISA antibody dose-response curv...