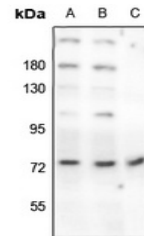


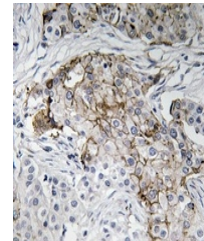
Product Datasheet

Beta-NaCH (pT615) antibody (orb665509)

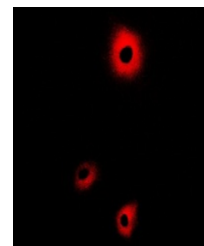
Description	Rabbit polyclonal antibody to Beta-NaCH (Phospho-T615)
Species/Host	Rabbit
Reactivity	Human, Mouse, Rat, Sheep
Conjugation	Unconjugated
Tested Applications	IF, IH, WB
Immunogen	KLH-conjugated synthetic phosphopeptide corresponding to residues surrounding T615 of human Beta-NaCH protein. The exact sequence is proprietary.
Target	SCNN1B
Preservatives	Liquid in 0.42% Potassium phosphate, 0.87% Sodium chloride, pH 7.3, 30% glycerol, and 0.01% sodium azide.
Form/Appearance	Liquid in 0.42% Potassium phosphate, 0.87% Sodium chloride, pH 7.3, 30% glycerol, and 0.01% sodium azide.
Storage	Maintain refrigerated at 2-8°C for up to 2 weeks. For long term storage store at -20°C in small aliquots to prevent freeze-thaw cycles.
Note	For research use only
Clonality	Polyclonal
Source	Rabbit
Uniprot ID	P51168, Q9WU38, P37090
Entrez	20277, 6338, 24767
Dilution Range	WB: 1-500-1000, IHC-P: 1-50-200, IF: 1-100-500
Expiration Date	12 months from date of receipt.



Western blot analysis of Beta-NaCH (Phos...



Immunohistochemical analysis of Beta-NaC...



Immunofluorescent analysis of Beta-NaCH ...