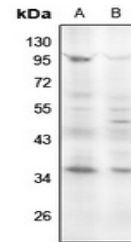


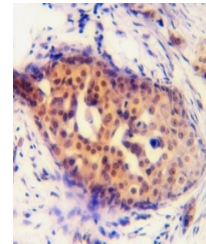
Product Datasheet

Cyclin D1 (pS90) antibody (orb665497)

Description	Rabbit polyclonal antibody to Cyclin D1 (Phospho-S90)
Species/Host	Rabbit
Reactivity	Human, Mouse, Rat, Sheep
Conjugation	Unconjugated
Tested Applications	IH, WB
Immunogen	KLH-conjugated synthetic phosphopeptide corresponding to residues surrounding S90 of human Cyclin D1 protein. The exact sequence is proprietary.
Target	CCND1
Preservatives	Liquid in 0.42% Potassium phosphate, 0.87% Sodium chloride, pH 7.3, 30% glycerol, and 0.01% sodium azide.
Form/Appearance	Liquid in 0.42% Potassium phosphate, 0.87% Sodium chloride, pH 7.3, 30% glycerol, and 0.01% sodium azide.
Storage	Maintain refrigerated at 2-8°C for up to 2 weeks. For long term storage store at -20°C in small aliquots to prevent freeze-thaw cycles.
Note	For research use only
Clonality	Polyclonal
Source	Rabbit
Uniprot ID	P25322, P39948, P24385
Entrez	12443, 595, 58919
Dilution Range	WB: 1-500-1000
Expiration Date	12 months from date of receipt.



Western blot analysis of Cyclin D1 (Phos...)



Immunohistochemical analysis of Cyclin D1