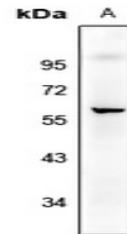


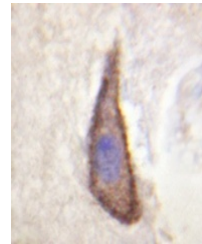
Product Datasheet

CD226 (pS329) antibody (orb665494)

Description	Rabbit polyclonal antibody to CD226 (Phospho-S329)
Species/Host	Rabbit
Reactivity	Human, Mouse, Primate
Conjugation	Unconjugated
Tested Applications	IF, IH, WB
Immunogen	KLH-conjugated synthetic phosphopeptide corresponding to residues surrounding S329 of human CD226 protein. The exact sequence is proprietary.
Target	CD226
Preservatives	Liquid in 0.42% Potassium phosphate, 0.87% Sodium chloride, pH 7.3, 30% glycerol, and 0.01% sodium azide.
Form/Appearance	Liquid in 0.42% Potassium phosphate, 0.87% Sodium chloride, pH 7.3, 30% glycerol, and 0.01% sodium azide.
Storage	Maintain refrigerated at 2-8°C for up to 2 weeks. For long term storage store at -20°C in small aliquots to prevent freeze-thaw cycles.
Note	For research use only
Clonality	Polyclonal
Source	Rabbit
Uniprot ID	Q15762 , Q8K4F0
Entrez	10666 , 225825
Dilution Range	WB: 1-500-1000, IHC-P: 1-50-200, IF: 1-100-500
Expiration Date	12 months from date of receipt.



Western blot analysis of CD226 (Phospho-S329)



Immunohistochemical analysis of CD226 (Phospho-S329)



Immunofluorescent analysis of CD226 (Phospho-S329)