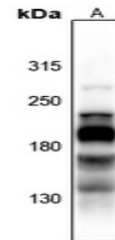


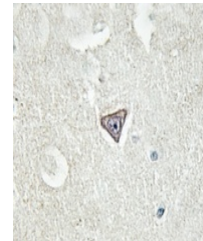
Product Datasheet

L1CAM (pS1181) antibody (orb665493)

Description	Rabbit polyclonal antibody to L1CAM (Phospho-S1181)
Species/Host	Rabbit
Reactivity	Human, Mouse, Rat, Zebrafish
Conjugation	Unconjugated
Tested Applications	IH, WB
Immunogen	KLH-conjugated synthetic phosphopeptide corresponding to residues surrounding S1181 of human L1CAM protein. The exact sequence is proprietary.
Target	L1CAM
Preservatives	Liquid in 0.42% Potassium phosphate, 0.87% Sodium chloride, pH 7.3, 30% glycerol, and 0.01% sodium azide.
Form/Appearance	Liquid in 0.42% Potassium phosphate, 0.87% Sodium chloride, pH 7.3, 30% glycerol, and 0.01% sodium azide.
Storage	Maintain refrigerated at 2-8°C for up to 2 weeks. For long term storage store at -20°C in small aliquots to prevent freeze-thaw cycles.
Note	For research use only
Clonality	Polyclonal
Source	Rabbit
Uniprot ID	P11627, P32004, Q05695
Entrez	3897, 50687
Dilution Range	WB: 1-500-1000, IHC-P: 1-50-200
Expiration Date	12 months from date of receipt.



Western blot analysis of L1CAM (Phospho-...



Immunohistochemical analysis of L1CAM (P...