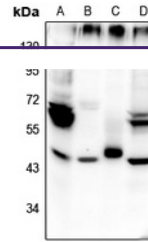

Product Datasheet

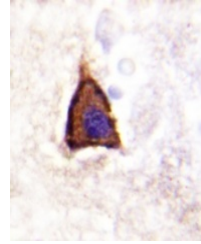
**Beta-2 Adrenergic Receptor (pS355/S356)
antibody (orb665487)**

Description

Rabbit polyclonal antibody to Beta-2



Western blot analysis of Beta-2 Adrenergic...



Immunohistochemical analysis of Beta-2 A...

Species/Host

Rabbit

Reactivity

Human, Mouse, Rat

Conjugation

Unconjugated

Tested Applications

IH, WB

Immunogen

KLH-conjugated synthetic phosphopeptide corresponding to residues surrounding S355/S356 of human Beta-2 Adrenergic Receptor protein. The exact sequence is proprietary.

Target

ADRB2

Preservatives

Liquid in 0.42% Potassium phosphate, 0.87% Sodium chloride, pH 7.3, 30% glycerol, and 0.01% sodium azide.

Form/Appearance

Liquid in 0.42% Potassium phosphate, 0.87% Sodium chloride, pH 7.3, 30% glycerol, and 0.01% sodium azide.

Storage

Maintain refrigerated at 2-8°C for up to 2 weeks. For long term storage store at -20°C in small aliquots to prevent freeze-thaw cycles.

Note

For research use only

Clonality

Polyclonal

Source

Rabbit

Uniprot ID
[P10608](#), [P07550](#), [P18762](#)
Entrez
[11555](#), [154](#)
Dilution Range

WB: 1-500-1000, IHC-P: 1-50-200

Expiration Date

12 months from date of receipt.