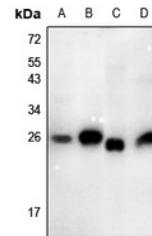


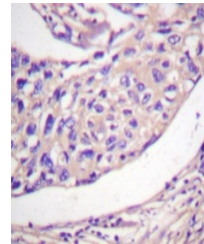
Product Datasheet

Thymidine Kinase 1 (pS13) antibody (orb665484)

| | |
|----------------------------|-----------------------------------------------------------------------------------------------------------------------------------------------------------|
| Description | Rabbit polyclonal antibody to Thymidine Kinase 1 (Phospho-S13) |
| Species/Host | Rabbit |
| Reactivity | Human, Mouse, Rat |
| Conjugation | Unconjugated |
| Tested Applications | IH, WB |
| Immunogen | KLH-conjugated synthetic phosphopeptide corresponding to residues surrounding S13 of human Thymidine Kinase 1 protein. The exact sequence is proprietary. |
| Target | TK1 |
| Preservatives | Liquid in 0.42% Potassium phosphate, 0.87% Sodium chloride, pH 7.3, 30% glycerol, and 0.01% sodium azide. |
| Form/Appearance | Liquid in 0.42% Potassium phosphate, 0.87% Sodium chloride, pH 7.3, 30% glycerol, and 0.01% sodium azide. |
| Storage | Maintain refrigerated at 2-8°C for up to 2 weeks. For long term storage store at -20°C in small aliquots to prevent freeze-thaw cycles. |
| Note | For research use only |
| Clonality | Polyclonal |
| Source | Rabbit |
| Uniprot ID | P04184, P04183, P27158 |
| Entrez | 24834, 21877, 7083 |
| Dilution Range | WB: 1-500-1000, IHC-P: 1-50-200 |
| Expiration Date | 12 months from date of receipt. |



Western blot analysis of Thymidine Kinase 1 (pS13) antibody.



Immunohistochemical analysis of Thymidine Kinase 1 (pS13) antibody.