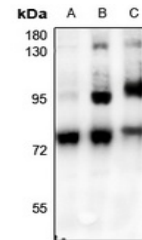


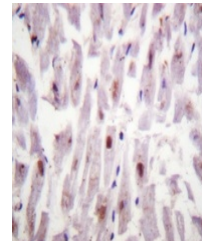
Product Datasheet

c-RAF (pS621) antibody (orb665483)

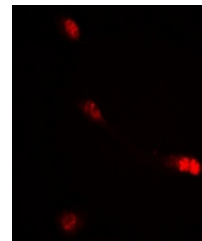
Description	Rabbit polyclonal antibody to c-RAF (Phospho-S621)
Species/Host	Rabbit
Reactivity	Human, Mouse, Rat
Conjugation	Unconjugated
Tested Applications	IF, IH, WB
Immunogen	KLH-conjugated synthetic phosphopeptide corresponding to residues surrounding S621 of human c-RAF protein. The exact sequence is proprietary.
Target	RAF1
Preservatives	Liquid in 0.42% Potassium phosphate, 0.87% Sodium chloride, pH 7.3, 30% glycerol, and 0.01% sodium azide.
Form/Appearance	Liquid in 0.42% Potassium phosphate, 0.87% Sodium chloride, pH 7.3, 30% glycerol, and 0.01% sodium azide.
Storage	Shipped at 4°C. Upon delivery aliquot and store at -20°C for one year. Avoid freeze/thaw cycles.
Note	For research use only
Clonality	Polyclonal
Source	Rabbit
Uniprot ID	P04049 , P11345 , Q99N57
Entrez	5894 , 110157 , 24703
Dilution Range	WB: 1-500-1000, IHC-P: 1-50-200, IF: 1-100-500
Expiration Date	12 months from date of receipt.



Western blot analysis of c-RAF (Phospho-...



Immunohistochemical analysis of c-RAF (P...



Immunofluorescent analysis of c-RAF (Pho...