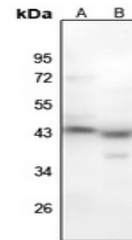


Product Datasheet

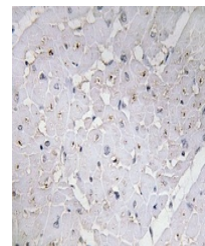
MYOD1 (pS200) antibody (orb665479)

Description	Rabbit polyclonal antibody to MYOD1 (Phospho-S200)
Species/Host	Rabbit
Reactivity	Human, Mouse, Porcine, Rat, Sheep, Zebrafish
Conjugation	Unconjugated
Tested Applications	IH, WB
Immunogen	KLH-conjugated synthetic phosphopeptide corresponding to residues surrounding S200 of human MYOD1 protein. The exact sequence is proprietary.
Target	MYOD1
Preservatives	Liquid in 0.42% Potassium phosphate, 0.87% Sodium chloride, pH 7.3, 30% glycerol, and 0.01% sodium azide.
Form/Appearance	Liquid in 0.42% Potassium phosphate, 0.87% Sodium chloride, pH 7.3, 30% glycerol, and 0.01% sodium azide.
Storage	Maintain refrigerated at 2-8°C for up to 2 weeks. For long term storage store at -20°C in small aliquots to prevent freeze-thaw cycles.
Note	For research use only
Clonality	Polyclonal
Source	Rabbit
Uniprot ID	P15172 , Q02346 , P10085
Entrez	337868 , 4654 , 17927
Dilution Range	WB: 1-500-1000, IHC-P: 1-50-200
Expiration Date	12 months from date of receipt.



Western blot analysis of MYOD1 (Phospho-

...



Immunohistochemical analysis of MYOD1 (P...