

---

## Product Datasheet

**FOXO1/3 (pS322+S325/pS318+S321) antibody  
(orb665477)**

**Description**

Rabbit polyclonal antibody to FOXO1/3

**Species/Host**

Rabbit

**Reactivity**

Human, Mouse, Porcine, Rat

**Conjugation**

Unconjugated

**Tested Applications**

IH, WB

**Immunogen**

KLH-conjugated synthetic phosphopeptide corresponding to residues surrounding S322+S325/pS318+S321 of human FOXO1/3 protein. The exact sequence is proprietary.

**Target**

FOXO1; FOXO3

**Preservatives**

Liquid in 0.42% Potassium phosphate, 0.87% Sodium chloride, pH 7.3, 30% glycerol, and 0.01% sodium azide.

**Form/Appearance**

Liquid in 0.42% Potassium phosphate, 0.87% Sodium chloride, pH 7.3, 30% glycerol, and 0.01% sodium azide.

**Storage**

Maintain refrigerated at 2-8°C for up to 2 weeks. For long term storage store at -20°C in small aliquots to prevent freeze-thaw cycles.

**Note**

For research use only

**Clonality**

Polyclonal

**Source**

Rabbit

**Uniprot ID**
[G3V7R4](#), [Q9R1E0](#), [Q9WVH4](#), [O43524](#), [Q12778](#)
**Entrez**
[56484](#), [2308](#), [84482](#), [56458](#)
**Dilution Range**

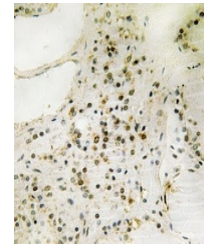
WB: 1-500-1000, IHC-P: 1-50-200

**Expiration Date**

12 months from date of receipt.



Western blot analysis of FOXO1/3 (Phospho...



Immunohistochemical analysis of FOXO1/3

...