

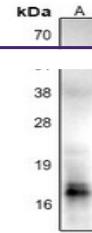
---

## Product Datasheet

### Histone H2B (AcK85) antibody (orb665470)

**Description**

Rabbit polyclonal antibody to Histone H2B (Acetyl-



Western blot analysis of Histone H2B (Ac...

**Species/Host**

Rabbit

**Reactivity**

Human, Mouse, Rat

**Conjugation**

Unconjugated

**Tested Applications**

WB

**Immunogen**

KLH-conjugated synthetic acetylated peptide corresponding to residues surrounding K85 of human Histone H2B protein. The exact sequence is proprietary.

**Target**

HIST1H2BC; HIST1H2BE; HIST1H2BF; HIST1H2BG; HIST1H2BI; HIST1H2BD; HIST1H2BH; HIST1H2BK; HIST1H2BL; HIST1H2BM; HIST1H2BN; HIST2H2BF; H2BFS

**Preservatives**

Liquid in 0.42% Potassium phosphate, 0.87% Sodium chloride, pH 7.3, 30% glycerol, and 0.01% sodium azide.

**Form/Appearance**

Liquid in 0.42% Potassium phosphate, 0.87% Sodium chloride, pH 7.3, 30% glycerol, and 0.01% sodium azide.

**Storage**

Maintain refrigerated at 2-8°C for up to 2 weeks. For long term storage store at -20°C in small aliquots to prevent freeze-thaw cycles.

**Note**

For research use only

**Clonality**

Polyclonal

**Source**

Rabbit

**Uniprot ID**
[Q99880](#), [Q99877](#), [Q99879](#), [Q93079](#), [O60814](#), [P62807](#), [Q6ZWY9](#), [P58876](#), [Q64475](#), [Q64478](#), [P23527](#), [P33778](#), [P06899](#)
**Entrez**
[8344](#), [8341](#), [319182](#), [440689](#), [319179](#), [319178](#), [85236](#), [8342](#), [8340](#), [8339](#), [8345](#), [8343](#), [8347](#), [8346](#), [3017](#)
**Dilution Range**

WB: 1-500-1000

**Expiration Date**

12 months from date of receipt.