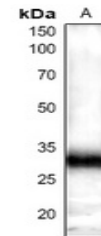


Product Datasheet

GRF-pan antibody (orb665443)

Description	Rabbit polyclonal antibody to GRF-pan
Species/Host	Rabbit
Reactivity	A. thaliana
Conjugation	Unconjugated
Tested Applications	WB
Immunogen	KLH-conjugated synthetic peptide encompassing a sequence within the N-term region of arabidopsis thaliana GRF-pan. The exact sequence is proprietary.
Target	GRF1; GRF2; GRF3; GRF4; GRF5; GRF6; GRF7; GRF8; GRF9
Preservatives	Liquid in 0.42% Potassium phosphate, 0.87% Sodium chloride, pH 7.3, 30% glycerol, and 0.01% sodium azide.
Form/Appearance	Liquid in 0.42% Potassium phosphate, 0.87% Sodium chloride, pH 7.3, 30% glycerol, and 0.01% sodium azide.
Storage	Maintain refrigerated at 2-8°C for up to 2 weeks. For long term storage store at -20°C in small aliquots to prevent freeze-thaw cycles.
Note	For research use only
Clonality	Polyclonal
Source	Rabbit
Uniprot ID	P42643 , Q96299 , Q96300 , P46077 , P48349 , P48348 , P42644 , P42645 , Q01525
Entrez	840403 , 826479 , 830909 , 833836 , 831462 , 818859 , 836668 , 821060 , 844165
Dilution Range	WB: 1-500-2000
Expiration Date	12 months from date of receipt.



Western blot analysis of GRF-pan express...