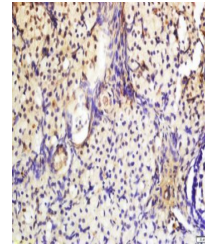


## Product Datasheet

### PAK2 (phospho-Ser20) antibody (orb6637)

<b>Description</b>	PAK2 (phospho-Ser20) antibody
<b>Species/Host</b>	Rabbit
<b>Reactivity</b>	Mouse
<b>Conjugation</b>	Unconjugated
<b>Tested Applications</b>	ELISA, IF, IHC-Fr, IHC-P
<b>Immunogen</b>	KLH conjugated Synthesised phosphopeptide derived from human PAK2 around the phosphorylation site of Ser20 (MS(p-S)TI)
<b>Target</b>	Phospho-PAK2 (Ser20)
<b>Preservatives</b>	0.01M TBS(pH7.4) with 1% rAlbumin, 0.03% Proclin300 and 50% Glycerol.
<b>Form/Appearance</b>	Liquid
<b>Concentration</b>	1mg/ml
<b>Storage</b>	Shipped at 4°C. Store at -20 °C for one year. Avoid repeated freeze/thaw cycles.
<b>Note</b>	For research use only
<b>Isotype</b>	IgG
<b>Clonality</b>	Polyclonal
<b>MW</b>	58 kDa
<b>Uniprot ID</b>	<a href="#">Q13177</a>
<b>Expiration Date</b>	12 months from date of receipt.



Immunohistochemical staining of mouse ov...