
Product Datasheet

**p70 S6 Kinase Beta (phospho-Thr421/Ser424)
antibody (orb6619)**

Description

p70 S6 Kinase Beta (phospho-


Species/Host

Rabbit

Reactivity

Human, Rat

Conjugation

Unconjugated

Tested Applications

FC

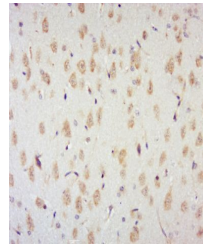
Immunohistochemical staining of Rat kidn...

Immunogen

KLH conjugated Synthesised phosphopeptide derived from human RPS6KB2 around the phosphorylation site of Thr444/Ser447 (PR(P-T)PV(p-S)PV)

Target

Phospho-p70 S6 Kinase Beta (Thr444 + Ser447)



Immunohistochemical staining of rat brai...

Preservatives

0.01M TBS(pH7.4) with 1% rAlbumin, 0.03% Proclin300 and 50% Glycerol.

Form/Appearance

Liquid

Concentration

1mg/ml

Storage

Shipped at 4°C. Store at -20 °C for one year. Avoid repeated freeze/thaw cycles.

Note

For research use only

Isotype

IgG

Clonality

Polyclonal

MW

60 kDa

Uniprot ID

[Q9UBS0](#)

Dilution Range

WB=1:500-2000, IHC-P=1:100-500, IHC-F=1:100-500, IF=1:100-500, ELISA=1:5000-10000

Expiration Date

12 months from date of receipt.