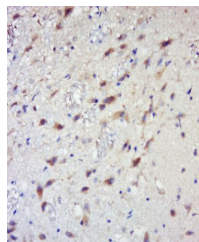


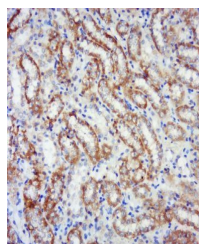
Product Datasheet

RPS6KB1 (phospho-Thr421+Ser424) antibody (orb6615)

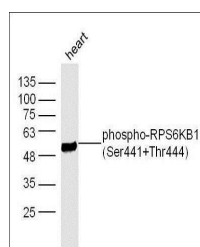
Description	RPS6KB1 (phospho-Thr421+Ser424) antibody
Species/Host	Rabbit
Reactivity	Human, Mouse, Rat
Conjugation	Unconjugated
Tested Applications	WB
Immunogen	KLH conjugated Synthesised phosphopeptide derived from human RPS6KB1 around the phosphorylation site of Ser441+Thr444 (IG(p-S)PR(p-T)PV)
Target	phospho-RPS6KB1 (Ser441+Thr444)
Preservatives	0.01M TBS(pH7.4) with 1% rAlbumin, 0.03% Proclin300 and 50% Glycerol.
Form/Appearance	Liquid
Concentration	1mg/ml
Storage	Shipped at 4°C. Store at -20 °C for one year. Avoid repeated freeze/thaw cycles.
Note	For research use only
Isotype	IgG
Clonality	Polyclonal
MW	58 kDa
Uniprot ID	P23443
Dilution Range	WB=1:500-2000
Expiration Date	12 months from date of receipt.



Immunohistochemical staining of rat brai...



Immunohistochemical staining of Rat kidn...



Western blot analysis of mouse Heart lys...