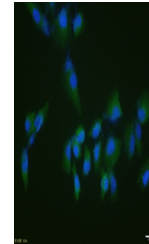


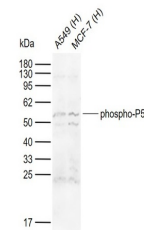
Product Datasheet

P53 (phospho-Ser15) antibody (orb6594)

Description	P53 (phospho-Ser15) antibody
Species/Host	Rabbit
Reactivity	Human, Mouse
Conjugation	Unconjugated
Tested Applications	FC, ICC, IHC-P, WB
Immunogen	KLH conjugated Synthesised phosphopeptide derived from human P53 around the phosphorylation site of Ser15 (PL(p-S)QE)
Target	phospho-P53 (Ser15)
Preservatives	0.01M TBS(pH7.4) with 1% rAlbumin, 0.03% Proclin300 and 50% Glycerol.
Form/Appearance	Liquid
Concentration	1mg/ml
Storage	Maintain refrigerated at 2-8°C for up to 2 weeks. For long term storage store at -20°C in small aliquots to prevent freeze-thaw cycles.
Note	For research use only
Isotype	IgG
Clonality	Polyclonal
MW	43 kDa
Uniprot ID	P04637
Dilution Range	WB=1:500-2000, IHC-P=1:100-500, ICC=1:100, Flow-Cyt=1µg /test, IHC-F=1:100-500, IF=1:100-500, ELISA=1:5000-10000
Expiration Date	12 months from date of receipt.



ICC analysis of A549 cell using phospho-...



Western blot: Lane 1: Human A549 cell; Lane...