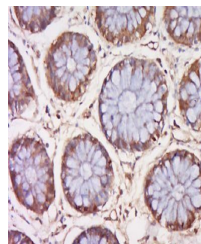


## Product Datasheet

# MKK4 (phospho-Ser257/Thr261) antibody (orb6585)

<b>Description</b>	MKK4 (phospho-Ser257/Thr261) antibody
<b>Species/Host</b>	Rabbit
<b>Reactivity</b>	Human, Mouse
<b>Conjugation</b>	Unconjugated
<b>Tested Applications</b>	ELISA, IF, IHC-Fr, IHC-P, WB
<b>Immunogen</b>	KLH conjugated Synthesised phosphopeptide derived from human SEK1/MKK4 around the phosphorylation site of Ser257/Thr261 (VD(p-S)IAK(p-T)RD)
<b>Target</b>	Phospho-MEK4 (Ser257 + Thr261)
<b>Preservatives</b>	0.01M TBS(pH7.4) with 1% rAlbumin, 0.03% Proclin300 and 50% Glycerol.
<b>Form/Appearance</b>	Liquid
<b>Concentration</b>	1mg/ml
<b>Storage</b>	Shipped at 4°C. Store at -20 °C for one year. Avoid repeated freeze/thaw cycles.
<b>Note</b>	For research use only
<b>Isotype</b>	IgG
<b>Clonality</b>	Polyclonal
<b>MW</b>	44 kDa
<b>Uniprot ID</b>	<b>P45985</b>
<b>Expiration Date</b>	12 months from date of receipt.



Immunohistochemical staining of human ce...