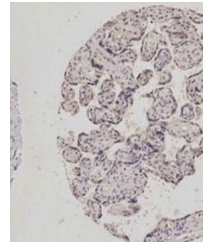


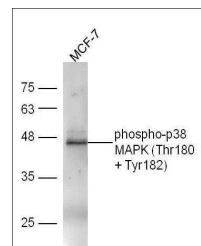
## Product Datasheet

# p38 MAPK (phospho-Thr180/Tyr182) antibody (orb6578)

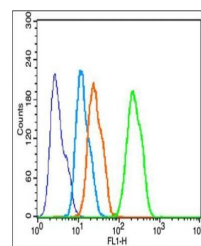
<b>Description</b>	p38 MAPK (phospho-Thr180/Tyr182) antibody
<b>Species/Host</b>	Rabbit
<b>Reactivity</b>	Human, Mouse
<b>Conjugation</b>	Unconjugated
<b>Tested Applications</b>	FC, ICC, IHC-P, WB
<b>Immunogen</b>	KLH conjugated Synthesised phosphopeptide derived from human p38 MAPK around the phosphorylation site of Thr180/Tyr182 (EM(p-T)G(p-Y)VA)
<b>Target</b>	phospho-p38 MAPK (Thr180 + Tyr182)
<b>Preservatives</b>	0.01M TBS(pH7.4) with 1% rAlbumin, 0.03% Proclin300 and 50% Glycerol.
<b>Form/Appearance</b>	Liquid
<b>Concentration</b>	1mg/ml
<b>Storage</b>	Shipped at 4°C. Store at -20 °C for one year. Avoid repeated freeze/thaw cycles.
<b>Note</b>	For research use only
<b>Isotype</b>	IgG
<b>Clonality</b>	Polyclonal
<b>MW</b>	41 kDa
<b>Uniprot ID</b>	<a href="#">Q16539</a>
<b>Dilution Range</b>	WB=1:500-2000, IHC-P=1:100-500, ICC=1:100, Flow-Cyt=1µg /test
<b>Expiration Date</b>	12 months from date of receipt.



Immunohistochemical staining of human pl...



Western blot analysis of extracts from M...



Flow cytometric analysis of HepG2 Cell u...