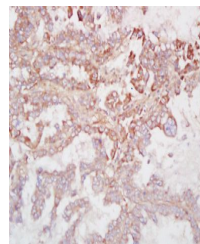


Product Datasheet

CDKN2A (phospho-Ser140) antibody (orb6567)

Description	CDKN2A (phospho-Ser140) antibody
Species/Host	Rabbit
Reactivity	Human
Conjugation	Unconjugated
Tested Applications	FC
Immunogen	KLH conjugated Synthesised phosphopeptide derived from human CDKN2A around the phosphorylation site of Ser140 (RG(p-S)NH)
Target	phospho-CDKN2A (Ser140)
Preservatives	0.01M TBS(pH7.4) with 1% rAlbumin, 0.03% Proclin300 and 50% Glycerol.
Form/Appearance	Liquid
Concentration	1mg/ml
Storage	Shipped at 4°C. Store at -20 °C for one year. Avoid repeated freeze/thaw cycles.
Note	For research use only
Isotype	IgG
Clonality	Polyclonal
MW	17 kDa
Uniprot ID	P42771
Dilution Range	Flow-Cyt=3ug/Test
Expiration Date	12 months from date of receipt.



Immunohistochemical staining of human lu...