

---

## Product Datasheet

### RANK antibody (orb6560)

**Description**

RANK antibody

**Species/Host**

Rabbit

**Reactivity**

Human, Mouse, Rat

**Conjugation**

Unconjugated

**Tested**

IHC-P

**Applications**
**Immunogen**

KLH conjugated synthetic peptide derived from human RANK. Please contact us for the exact immunogen sequence. The peptide is available as orb393922.

**Target**

RANK

**Form/Appearance**

10 mM PBS, 0.02% sodium azide

**Concentration**

- 100 µg (in 200 µl): 0.5 mg/ml- 200 µg (in 400 µl): 0.5 mg/ml

**Storage**

Store at 4°C for up to two weeks. For long term storage, aliquot and store at -20°C, avoid freeze/thaw cycles.

**Note**

For research use only

**Isotype**

IgG

**Clonality**

Polyclonal

**Purity**

Purified by Protein A affinity chromatography.

**MW**

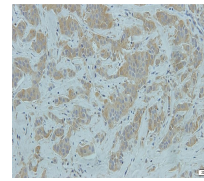
130kDa

**Uniprot ID**
[Q9Y6Q6](#)
**NCBI**
[001270951](#), [001257880](#), [11](#)
**Entrez**
[8792](#)
**Dilution Range**

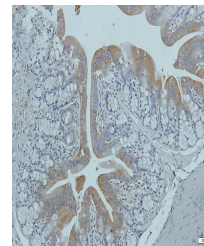
IHC-P: 1:100-1:500

**Expiration Date**

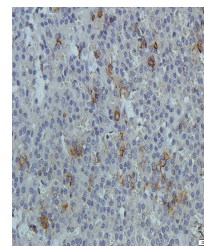
12 months from date of receipt.



IHC-P staining of human breast cancer ti...



Immunohistochemical staining of paraffin...



Immunohistochemical staining of paraffin...