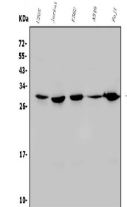


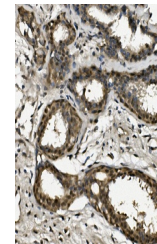
Product Datasheet

RPA32/RPA2 Antibody (orb654465)

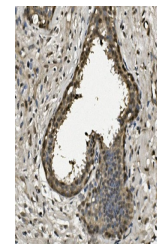
| | |
|----------------------------|---|
| Description | RPA32/RPA2 Antibody |
| Species/Host | Rabbit |
| Reactivity | Human |
| Conjugation | Unconjugated |
| Tested Applications | ELISA, FC, ICC, IF, IHC, WB |
| Immunogen | E.coli-derived human RPA32/RPA2 recombinant protein (Position: Q34-H254). |
| Form/Appearance | Lyophilized |
| Concentration | Adding 0.2 ml of distilled water will yield a concentration of 500 µg/ml. |
| Storage | Store at -20°C for one year from date of receipt. After reconstitution, at 4°C for one month. It can also be aliquotted and stored frozen at -20°C for six months. Avoid repeated freeze-thaw cycles. |
| Note | For research use only |
| Application notes | Tested Species: In-house tested species with positive results. Other applications have not been tested. Optimal dilutions should be determined by end users. Add 0.2ml of distilled water will yield a concentration of 500ug/ml. |
| Isotype | Rabbit IgG |
| Clonality | Polyclonal |
| MW | 29 kDa |
| Uniprot ID | P15927 |
| Expiration Date | 12 months from date of receipt. |



Western blot analysis of RPA32/RPA2 using anti-RPA32/RPA2 antibody.



IHC analysis of RPA32/RPA2 using anti-RPA32/RPA2 antibody.



IHC analysis of RPA32/RPA2 using anti-RPA32/RPA2 antibody.