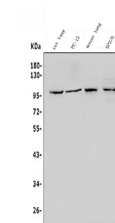


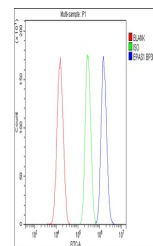
Product Datasheet

HIF-2-alpha/EPAS1 Antibody (orb654423)

Description	HIF-2-alpha/EPAS1 Antibody
Species/Host	Rabbit
Reactivity	Human, Mouse, Rat
Conjugation	Unconjugated
Tested Applications	FC, WB
Immunogen	A synthetic peptide corresponding to a sequence of human HIF-2-alpha/EPAS1 (SFEPYLLPELTRYDCEVN).
Form/Appearance	Lyophilized
Concentration	Adding 0.2 ml of distilled water will yield a concentration of 500 µg/ml.
Storage	Store at -20°C for one year from date of receipt. After reconstitution, at 4°C for one month. It can also be aliquotted and stored frozen at -20°C for six months. Avoid repeated freeze-thaw cycles.
Note	For research use only
Application notes	Tested Species: In-house tested species with positive results. Other applications have not been tested. Optimal dilutions should be determined by end users. Add 0.2ml of distilled water will yield a concentration of 500ug/ml.
Isotype	Rabbit IgG
Clonality	Polyclonal
MW	96 kDa
Uniprot ID	Q99814
Expiration Date	12 months from date of receipt.



Western blot analysis of HIF-2-alpha/EPAS1 antibody.



Flow Cytometry analysis of SiHa cells.