
Product Datasheet

**PP2A-alpha/PPP2CA Antibody (monoclonal, 3B6)
(orb654389)**

Description

PP2A-alpha/PPP2CA Antibody (monoclonal, 3B6)

Species/Host

Mouse

Reactivity

Human, Monkey, Mouse, Rat

Conjugation

Unconjugated

Tested Applications

FC, ICC, IF, IHC, WB

Immunogen

E.coli-derived human PP2A-alpha recombinant protein (Position: M1-L309). Human PP2A-alpha shares 100% amino acid (aa) sequence identity with both mouse and rat PP2A-alpha.

Form/Appearance

Lyophilized

Concentration

Adding 0.2 ml of distilled water will yield a concentration of 500 µg/ml.

Storage

Store at -20°C for one year from date of receipt. After reconstitution, at 4°C for one month. It can also be aliquotted and stored frozen at -20°C for six months. Avoid repeated freeze-thaw cycles.

Note

For research use only

Application notes

Tested Species: In-house tested species with positive results. Other applications have not been tested. Optimal dilutions should be determined by end users. Add 0.2ml of distilled water will yield a concentration of 500µg/ml.

Isotype

Mouse IgG2a

Clonality

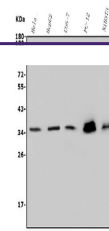
Monoclonal

MW

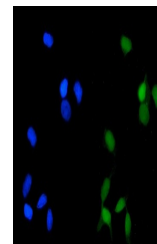
36 kDa

Uniprot ID
[P67775](#)
Expiration Date

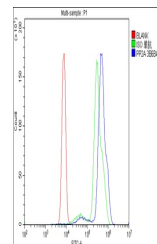
12 months from date of receipt.



Western blot analysis of PP2A-alpha/PPP2...



IF analysis of PP2A-alpha/PPP2CA using a...



Flow Cytometry analysis of U937 cells us...