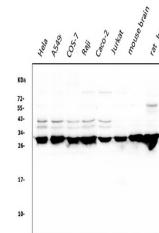


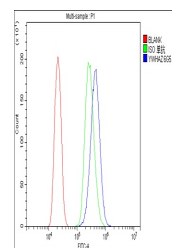
Product Datasheet

14-3-3 zeta/delta/YWHAZ Antibody (monoclonal, 6G5) (orb654290)

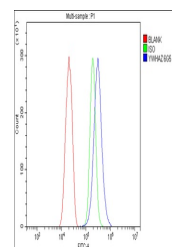
Description	14-3-3 zeta/delta/YWHAZ Antibody (monoclonal, 6G5)
Species/Host	Mouse
Reactivity	Human, Monkey, Mouse, Rat
Conjugation	Unconjugated
Tested Applications	FC, WB
Immunogen	A synthetic peptide corresponding to a sequence of human 14-3-3 zeta/delta (LLEKFLIPNASQAESKVFYFLKMKGDYRYLAEVAAGDDKKGIVDQ).
Form/Appearance	Lyophilized
Concentration	Adding 0.2 ml of distilled water will yield a concentration of 500 µg/ml.
Storage	Store at -20°C for one year from date of receipt. After reconstitution, at 4°C for one month. It can also be aliquotted and stored frozen at -20°C for six months. Avoid repeated freeze-thaw cycles.
Note	For research use only
Application notes	Tested Species: In-house tested species with positive results. Other applications have not been tested. Optimal dilutions should be determined by end users. Add 0.2ml of distilled water will yield a concentration of 500µg/ml.
Isotype	Mouse IgG2b
Clonality	Monoclonal
MW	28 kDa
Uniprot ID	P63104
Sensitivity	> 5000 cells
Expiration Date	12 months from date of receipt.



Western blot analysis of 14-3-3 zeta/del...



Flow Cytometry analysis of PC-3 cells us...



Flow Cytometry analysis of SiHa cells us...