

---

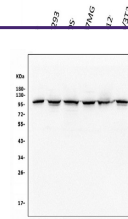
## Product Datasheet

**alpha 1 Catenin/CTNNA1 Antibody (monoclonal,  
10I2) (orb654281)**

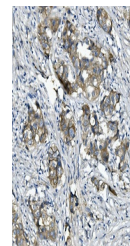
**Description**

alpha 1 Catenin/CTNNA1 Antibody (monoclonal,

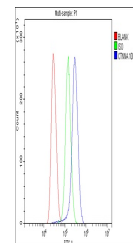
|                            |   |
|----------------------------|---|
| <b>Species/Host</b>        | Mouse   |
| <b>Reactivity</b>          | Human, Mouse, Rat   |
| <b>Conjugation</b>         | Unconjugated  |
| <b>Tested Applications</b> | FC, IHC, WB   |
| <b>Immunogen</b>           | E.coli-derived human CTNNA1 recombinant protein (Position: D143-D292). Human CTNNA1 shares 98% amino acid (aa) sequence identity with mouse CTNNA1.   |
| <b>Form/Appearance</b>     | Lyophilized   |
| <b>Concentration</b>       | Adding 0.2 ml of distilled water will yield a concentration of 500 µg/ml.   |
| <b>Storage</b>             | Store at -20°C for one year from date of receipt. After reconstitution, at 4°C for one month. It can also be aliquotted and stored frozen at -20°C for six months. Avoid repeated freeze-thaw cycles.                             |
| <b>Note</b>                | For research use only   |
| <b>Application notes</b>   | Tested Species: In-house tested species with positive results. Other applications have not been tested. Optimal dilutions should be determined by end users. Add 0.2ml of distilled water will yield a concentration of 500ug/ml. |
| <b>Isotype</b>             | Mouse IgG1  |
| <b>Clonality</b>           | Monoclonal  |
| <b>MW</b>                  | 100 kDa   |
| <b>Uniprot ID</b>          | <b>P35221</b>   |
| <b>Sensitivity</b>         | > 5000 cells  |
| <b>Expiration Date</b>     | 12 months from date of receipt.   |



Western blot analysis of CTNNA1 using an...



IHC analysis of CTNNA1 using anti-CTNNA1...



Flow Cytometry analysis of Jurkat cells ...