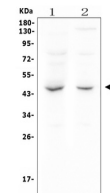


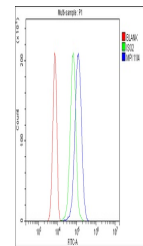
## Product Datasheet

### MPI Antibody (monoclonal, 1114) (orb654265)

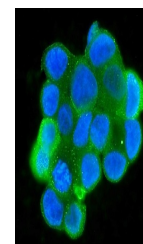
<b>Description</b>	MPI Antibody (monoclonal, 1114)
<b>Species/Host</b>	Mouse
<b>Reactivity</b>	Human
<b>Conjugation</b>	Unconjugated
<b>Tested Applications</b>	FC, ICC, IF, WB
<b>Immunogen</b>	E. coli-derived human MPI recombinant protein (Position: A2-K99). Human MPI shares 88.8% and 86.7% amino acid (aa) sequence identity with mouse and rat MPI, respectively.
<b>Form/Appearance</b>	Lyophilized
<b>Storage</b>	Store at -20°C for one year from date of receipt. After reconstitution, at 4°C for one month. It can also be aliquotted and stored frozen at -20°C for six months. Avoid repeated freeze-thaw cycles.
<b>Note</b>	For research use only
<b>Application notes</b>	Add 0.2ml of distilled water will yield a concentration of 500µg/ml.
<b>Isotype</b>	Mouse IgG1
<b>Clonality</b>	Monoclonal
<b>MW</b>	47 kDa
<b>Uniprot ID</b>	<a href="#">P34949</a>
<b>Sensitivity</b>	> 5000 cells
<b>Expiration Date</b>	12 months from date of receipt.



Western blot analysis of MPI using anti-MPI antibody.



Flow Cytometry analysis of SiHa cells using anti-MPI antibody.



IF analysis of MPI using anti-MPI antibody.