
Product Datasheet

Collagen I/COL1A1 Antibody (orb654259)

Description

Collagen I/COL1A1 Antibody

Species/Host

Rabbit

Reactivity

Human, Mouse

Conjugation

Unconjugated

Tested Applications

IHC, WB

Immunogen

A synthetic peptide corresponding to a sequence at the C-terminus of human Collagen I (1203-1218aa QPPQEKAHDGGRYRA), different from the related rat and mouse sequences by two amino acids.

Form/Appearance

Lyophilized

Concentration

Adding 0.2 ml of distilled water will yield a concentration of 500 µg/ml.

Storage

Maintain refrigerated at 2-8°C for up to 2 weeks. For long term storage store at -20°C in small aliquots to prevent freeze-thaw cycles.

Note

For research use only

Application notes

WB: The detection limit for COL1A1 is approximately 0.5ng/lane under reducing conditions. Tested Species: In-house tested species with positive results. Predicted Species: Species predicted to be fit for the product based on sequence similarities. By Heat: Boiling the paraffin sections in 10mM citrate buffer, pH6.0, for 20mins is required for the staining of formalin/paraffin sections. Other applications have not been tested. Optimal dilutions should be determined by end users. . Add 0.2ml of distilled water will yield a concentration of 500ug/ml.

Isotype

Rabbit IgG

Clonality

Polyclonal

MW

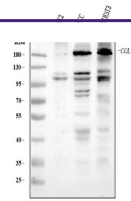
138941 MW

Uniprot ID
[P02452](#)
Sensitivity

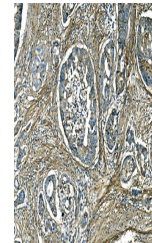
50pg/ml

Expiration Date

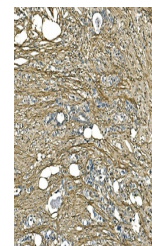
12 months from date of receipt.



Western blot analysis of COL1A1 using an...



IHC analysis of COL1A1 using anti-COL1A1...



IHC analysis of COL1A1 using anti-COL1A1...