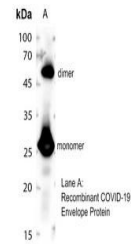


Product Datasheet

COVID-19 Envelope protein antibody (orb653668)

Description	Rabbit polyclonal antibody to COVID-19 Envelope Protein
Species/Host	Rabbit
Reactivity	Virus
Conjugation	Unconjugated
Tested Applications	ELISA, WB
Immunogen	KLH-conjugated synthetic peptide encompassing a sequence within the C-term region of COVID-19 Envelope Protein. The exact sequence is proprietary.
Target	E
Preservatives	Liquid in 0.42% Potassium phosphate, 0.87% Sodium chloride, pH 7.3, 30% glycerol, and 0.01% sodium azide.
Form/Appearance	Liquid in 0.42% Potassium phosphate, 0.87% Sodium chloride, pH 7.3, 30% glycerol, and 0.01% sodium azide.
Storage	Maintain refrigerated at 2-8°C for up to 2 weeks. For long term storage store at -20°C in small aliquots to prevent freeze-thaw cycles.
Note	For research use only
Clonality	Polyclonal
Source	Rabbit
Uniprot ID	PODTC4
Entrez	43740570
Dilution Range	WB: 1-1000-3000
Expiration Date	12 months from date of receipt.



Western blot analysis of COVID-19 Envelope...