
Product Datasheet

COVID-19 Spike glycoprotein antibody (orb653667)

Description

Rabbit polyclonal antibody to COVID-19 Spike

Species/Host

Rabbit

Reactivity

Virus

Conjugation

Unconjugated

Tested Applications

ELISA, WB

Immunogen

KLH-conjugated synthetic peptide encompassing a sequence within the center region of COVID-19 Spike glycoprotein. The exact sequence is proprietary.

Target

S

Preservatives

Liquid in 0.42% Potassium phosphate, 0.87% Sodium chloride, pH 7.3, 30% glycerol, and 0.01% sodium azide.

Form/Appearance

Liquid in 0.42% Potassium phosphate, 0.87% Sodium chloride, pH 7.3, 30% glycerol, and 0.01% sodium azide.

Storage

Maintain refrigerated at 2-8°C for up to 2 weeks. For long term storage store at -20°C in small aliquots to prevent freeze-thaw cycles.

Note

For research use only

Clonality

Polyclonal

Source

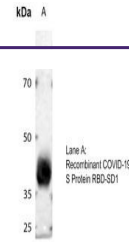
Rabbit

Uniprot ID
[P0DTC2](#)
Entrez
[43740568](#)
Dilution Range

WB: 1-1000-3000

Expiration Date

12 months from date of receipt.



Western blot analysis of COVID-19 Spike ...