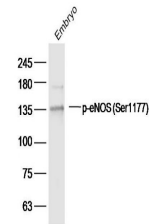


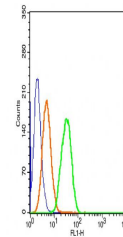
Product Datasheet

eNOS (phospho-Ser1177) antibody (orb6519)

Description	eNOS (phospho-Ser1177) antibody
Species/Host	Rabbit
Reactivity	Human, Mouse
Conjugation	Unconjugated
Tested Applications	FC, WB
Immunogen	KLH conjugated Synthesised phosphopeptide derived from mouse eNOS around the phosphorylation site of Ser1177 (TQ(p-S)FS)
Target	Phospho-eNOS (Ser1177)
Preservatives	0.01M TBS(pH7.4) with 1% rAlbumin, 0.03% Proclin300 and 50% Glycerol.
Form/Appearance	Liquid
Concentration	1mg/ml
Storage	Shipped at 4°C. Store at -20 °C for one year. Avoid repeated freeze/thaw cycles.
Note	For research use only
Isotype	IgG
Clonality	Polyclonal
MW	133 kDa
Uniprot ID	P29474
Dilution Range	WB=1:500-2000, Flow-Cyt=2µg /Test, IHC-P=1:100-500, IHC-F=1:100-500, IF=1:100-500, ELISA=1:5000-10000
Expiration Date	12 months from date of receipt.



Western blot analysis of Embryo (Mouse) ...



Flow cytometric analysis of HepG 2 cells...